



KERN & Sohn GmbH

Ziegelei 1

D-72336 Balingen

E-Mail: info@kern-sohn.com

Phone: +49-[0]7433- 9933-0

Fax: +49-[0]7433-9933-149

Internet: www.kern-sohn.com

Installation Instructions

Analogue module

(Factory option)

KERN KFB-A04-A05

Version 1.0

2019-02

GB

KFB-A04-A05-IA-e-1910



KERN KFB-A04-A05

Version 1.0 2019-02

Installation Instructions

Analogue module

Contents

1	General hints	3
1.1	Installing the module	3
1.2	Check the connections	5
1.2.1	With no load:	5
1.2.2	With maximum load:.....	5

1 General hints

Can be connected to the following KERN models:

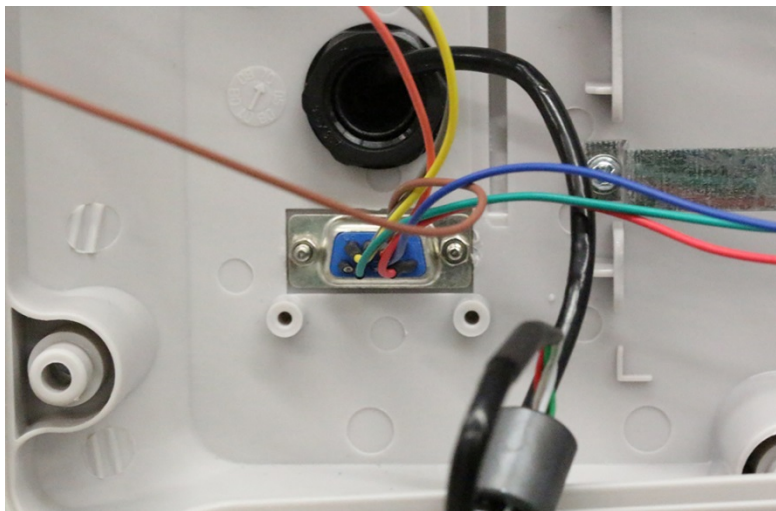
- KFB-TAM
- UFB
- UFA
- IFB
- NFB
- BFB

KFB-A04	KFB-A05
0 – 10 V	4 - 20 mA

1.1 Installing the module

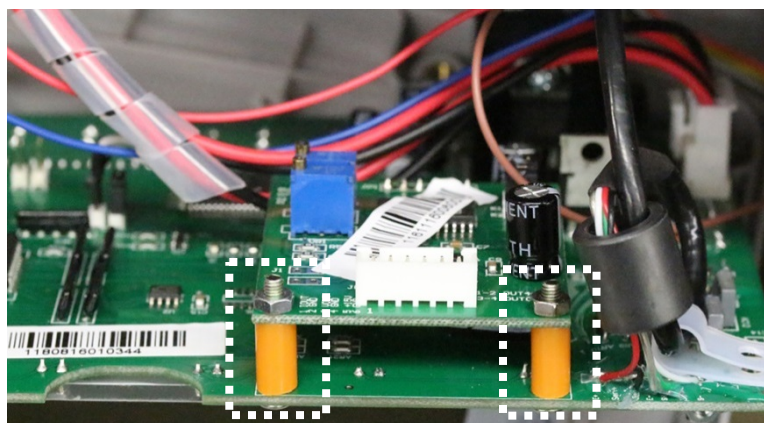
Open the display device's housing

Exchange RS 232 bushing

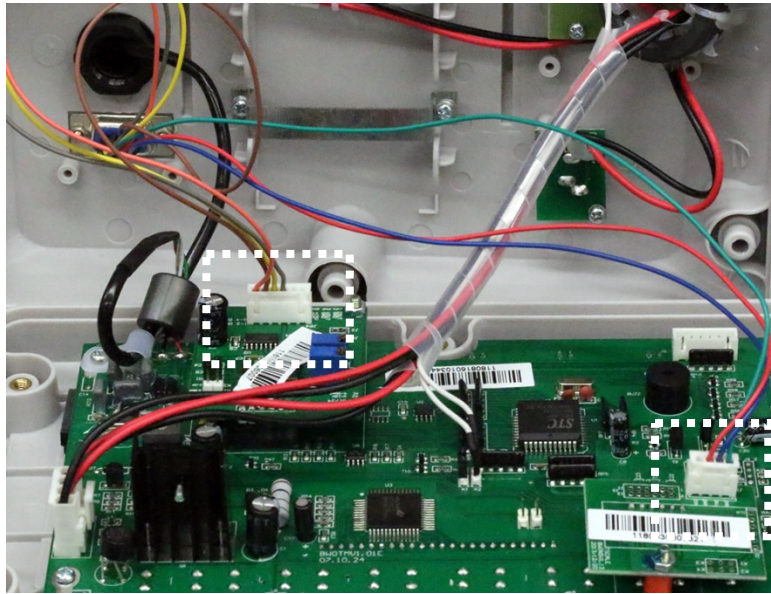


Remove the fastening screws (6x) from the display device's main board

Attach 2 screws with nuts and spacers to the main board and reattach main board to the housing

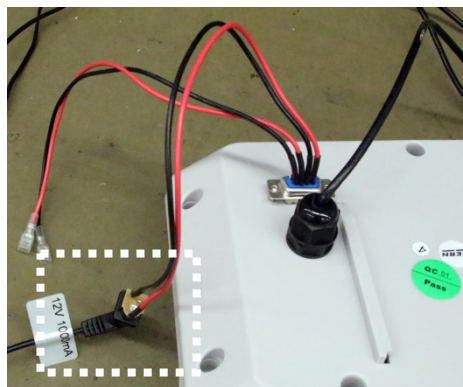


Connect the built-in RS 232 bushing to the relevant sockets on the board



Connect the display device to the power supply

Connect the additional power supply to the analogue module



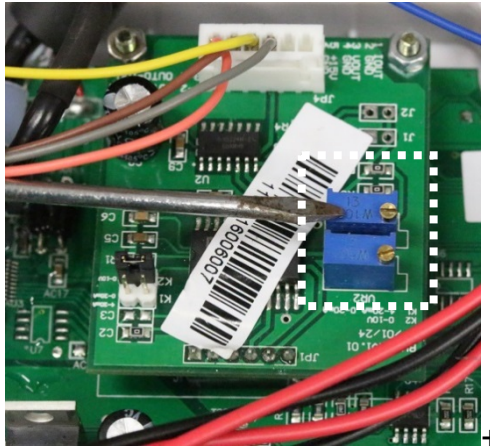
1.2 Check the connections

1.2.1 With no load:

Unload weighing plate

Connect the meter to the analogue module

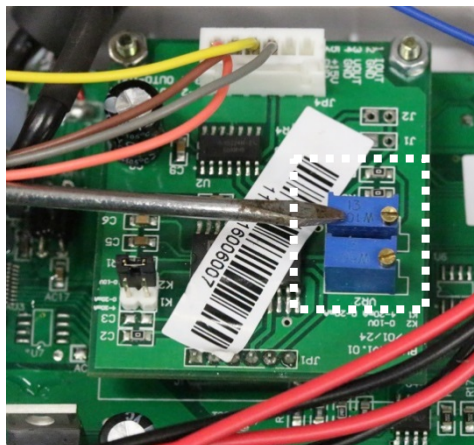
The reading value should show ~ 0 V;
readjust VR 1 to correct



1.2.2 With maximum load:

Load weighing plate with maximum load

The reading value should show ~ 10 V;
readjust VR 1 to correct



Remove the load from the weighing plate; the reading value should be ~ 0 V;
this means that the analogue module has been connected correctly
